

Delaware Memorial Bridge Deck Overlay Project on the New Jersey Bound Span



Today's Agenda

- Introductory Remarks – [DRBA Executive Director Thomas J. Cook](#)
- Project Overview – [DRBA Chief Engineer David A. Hoppenjans](#)
 - Background/Overview
 - Scope of Construction
 - Construction Phasing
 - Maintenance of Traffic
- Staying Informed – [DRBA Public Information Officer James E. Salmon](#)
- Q&A

2

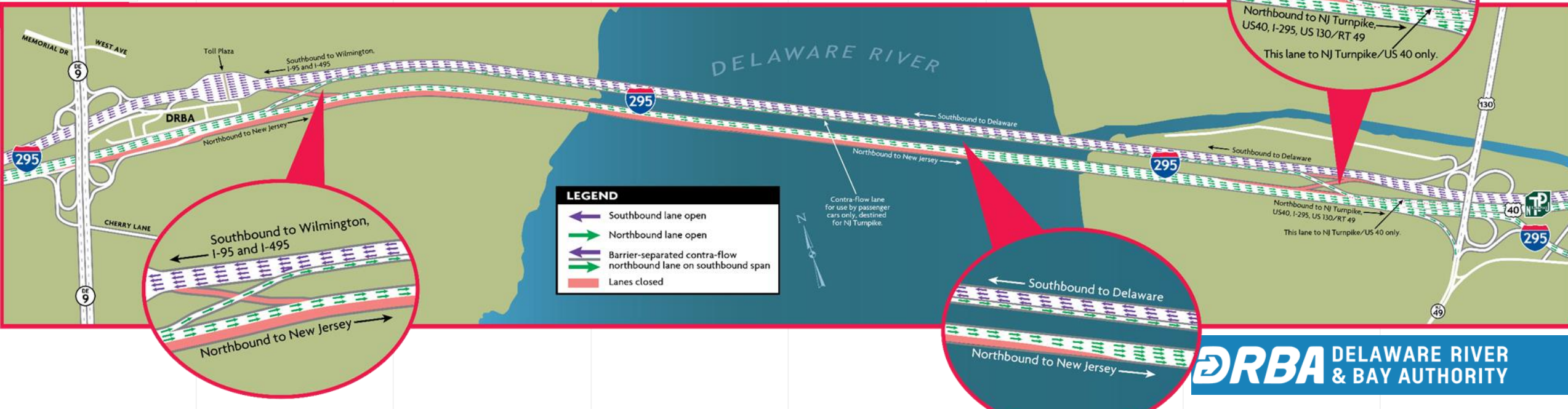


Background / Overview



Background / Overview

- DMB: Two independent bridge structures (NJ & DE Bound)
- Deck Assessment
 - Deck replacement required on NJ bound bridge
- Solutions Workshops
 - UHPC overlay in lieu of replacement
- Construction Phasing (Fall 2022; Spring 2023; Fall 2023)
 - Avoids peak summer season and winter holiday peaks.



Scope of Construction



Scope of Construction

- Rehabilitation of the Bridge Deck on the New Jersey-Bound Span
 - Remove Top 2 inches of Current Bridge Deck
 - Replace with Ultra High-Performance Concrete (UHPC) Overlay
 - Prepare Driving Surface
 - Sealing Deck Joints
- Two lanes closed during each Construction Phase
 - Third lane closed for night operations
- Project cost - \$71 million



Hydrodemolition

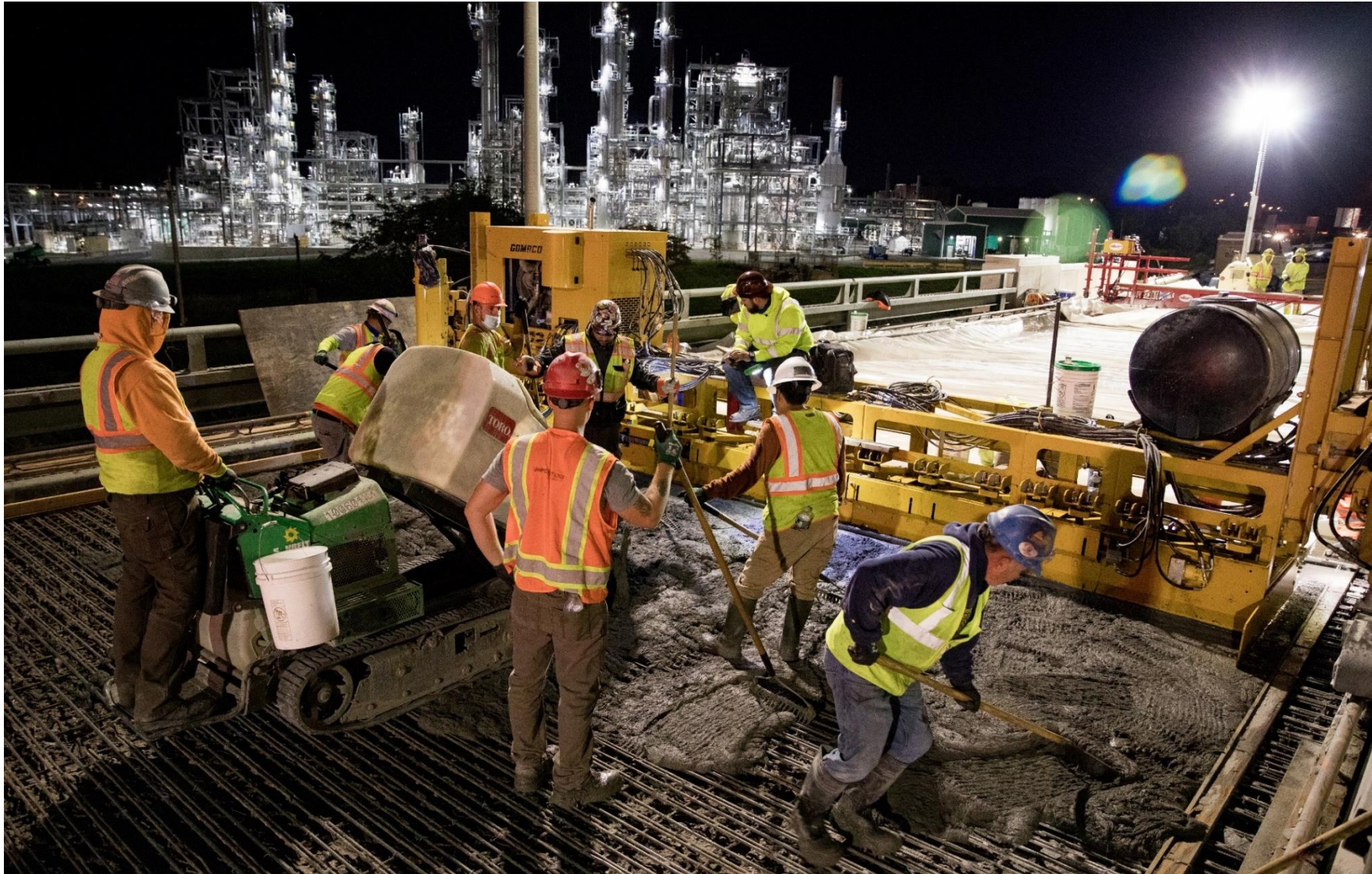


On-Site Mixing

8



Pouring



Curing

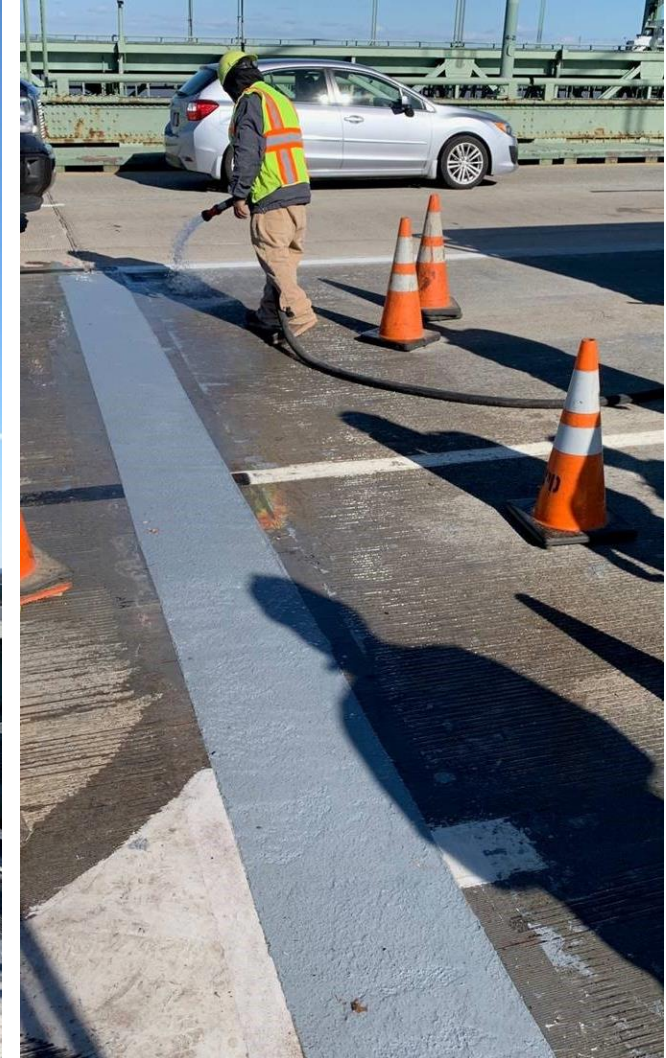


Grinding and Grooving



Flexible Plug Joints – Relief & Expansion Joints

12

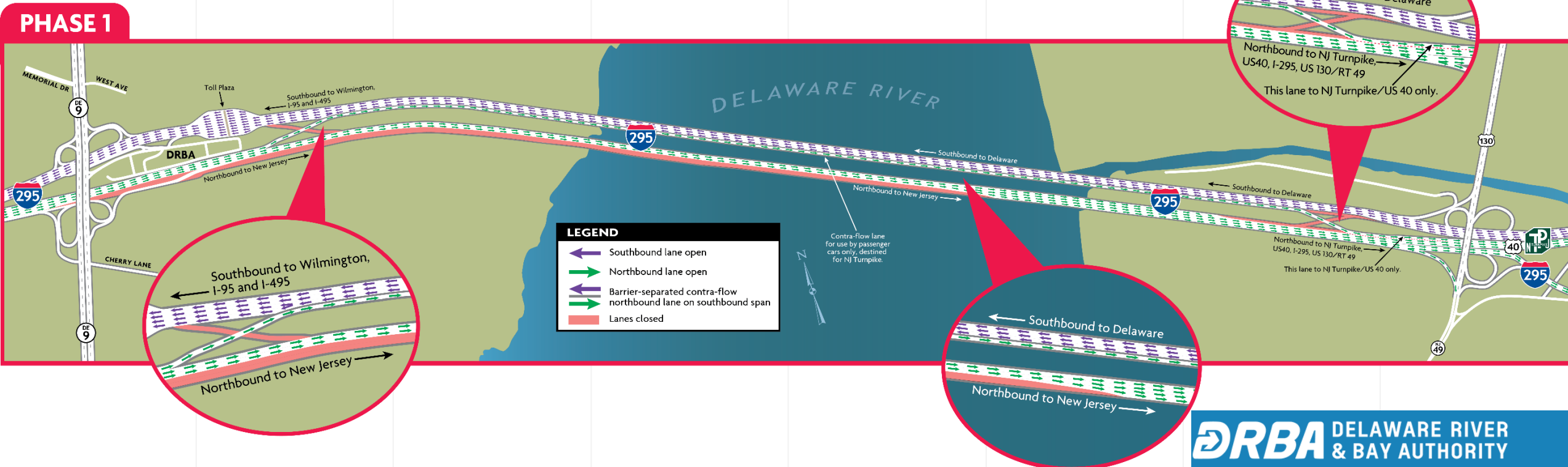


Construction Phases



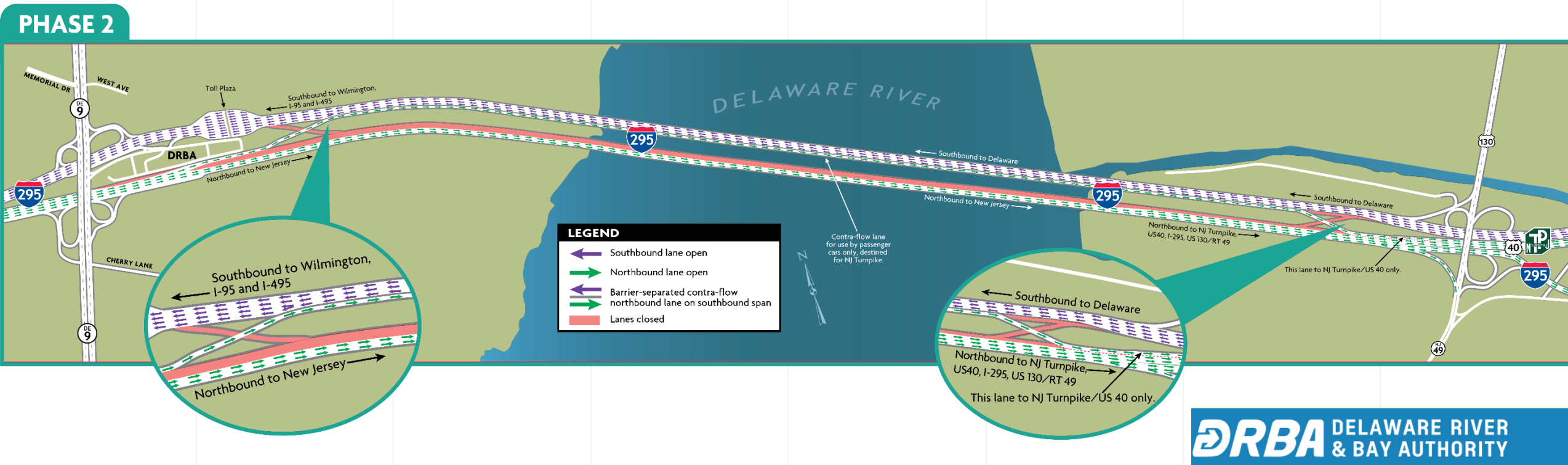
PHASE 1 (FALL 2022)

- Start Date: September 6, 2022
- Finish Date: November 22, 2022 (Week before Thanksgiving)
- Two right lanes closed for construction (midpoint of suspension bridge west – Delaware side)



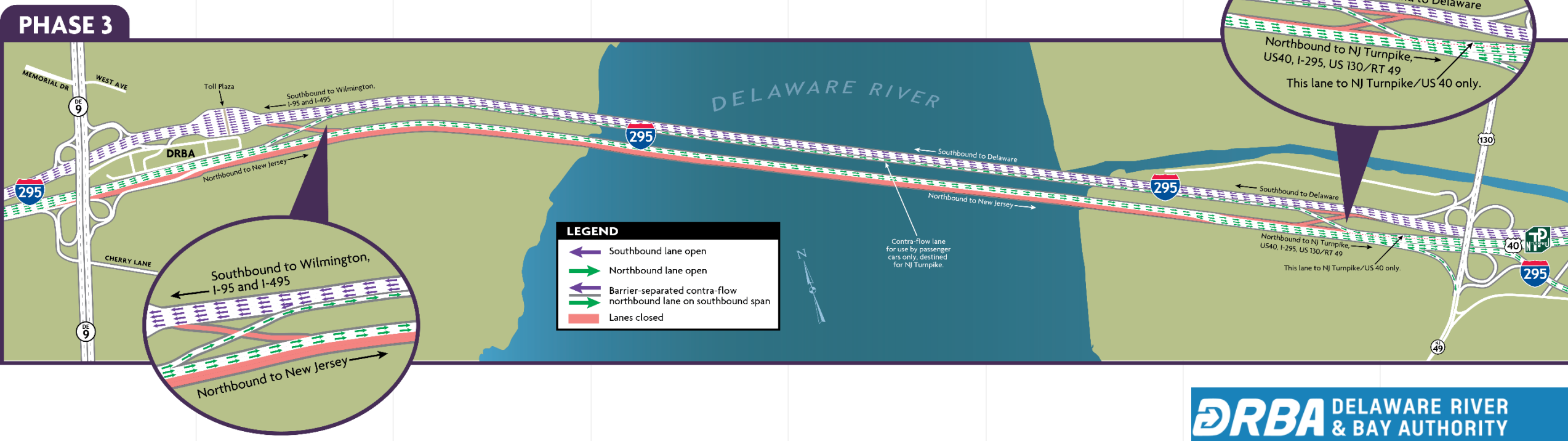
PHASE 2 (SPRING 2023)

- Start Date: February 1, 2023 (weather above freezing temperatures)
- Finish Date: May 25, 2023 (a week before Memorial Day)
- Two left lanes closed; construction full length of the northbound span end to end.



PHASE 3 (FALL 2023)

- Start Date: September 5, 2023 (after Labor Day)
- Finish Date: November 21, 2023 (week before Thanksgiving)
- Two right lanes closed for construction (midpoint of suspension bridge east – New Jersey side)



Maintenance of Traffic



MAINTENANCE AND PROTECTION OF TRAFFIC (MPT)

- All Construction Phases (1, 2 and 3) maintain three travel lanes to/from New Jersey:
 - Two travel lanes on northbound structure to New Jersey
 - One Contra-flow travel lane on southbound structure - concrete median barrier with glare screens to separate two-way traffic; opened 24/7 for cars only to New Jersey Turnpike
 - Three travel lanes on southbound structure
- UHPC Pours - Nighttime:
 - One travel lane northbound structure
 - One Contra-flow travel lane southbound structure
 - Three travel lanes on southbound structure

INCIDENT TRAFFIC MANAGEMENT

- Incident Operational Plan developed with DRBA Police and Operations and Maintenance
- On-Call and Standby Tow Services during all phases of construction
 - Standby Tow Service— Peak Periods Weekdays and Weekends
- Contra-flow travel - barrier gates opening for incident response

19



ANIMATION OF TRAFFIC PATTERN DURING CONSTRUCTION



DRBA DELAWARE RIVER
& BAY AUTHORITY

Delaware Memorial Bridge
Deck Rehabilitation Project

STAY INFORMED ON PROJECT

- Sign Up for Project Alerts – www.BridgeAlerts.com for lane closure information, traffic pattern changes and other project details
- Follow the project on Twitter @demembridge
- Look for DRBA I-295 northbound signs and portable message signs for advanced notice of lane restrictions and revised traffic patterns.
- Check traveler information through Delaware's Travel Advisories and New Jersey's 511 system.
- Please feel free to contact us at info_deckoverlay@drba.net with questions or concerns related to the project.

Questions?

